

## Weir Minerals Division

World leaders in pumps, valves, hydrocyclones and mill lining systems for the mining and mineral processing industries

# First choice for process efficiency

Excellent  
Minerals  
Solutions



**We've got the world covered**  
**Think Weir Minerals Division:**  
**- think all things slurry**

Specialists in delivering and supporting slurry equipment solutions including pumps, Hydro cyclones, valves and wear resistant linings for global mining and mineral processing, the power sector, general industrial and Sand & Gravel/Dredge.

Our Mission - to be the preferred supplier of slurry pumps and slurry handling equipment by providing the lowest ownership cost for customers worldwide.



**Horizontal Pumps**



**Vertical Pumps**



**Submersible Pumps**



**Geha Pumps**



**Hydrocyclones**



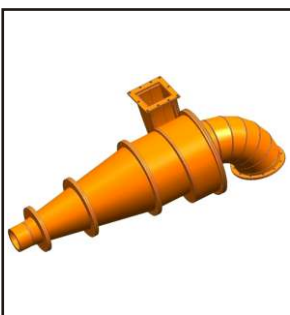
**Slurry Valves**



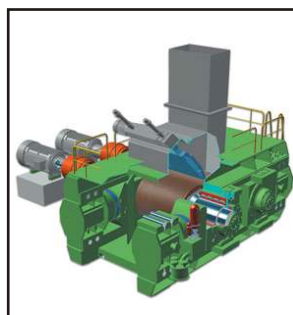
**Speciality Pumps**



**Mill Liners**



**Dense Media Cyclones**



**HPGR**



**Linatex Rubber**



**Engineering Services**

Weir Minerals are specialists in delivering and supporting slurry equipment solutions including pumps, hydro cyclones, valves, screen machines and screen media, rubber and wear resistant linings for global mining and mineral processing, the power sector and general industry. Our products strength lies in the superiority of our hydraulic designs & wear and corrosion & abrasion resistant materials.



WARMAN® centrifugal slurry pumps are the world's most comprehensive range of centrifugal slurry pumps for use in Mining & Minerals, Power, Generals Industrial and Sand & Gravel industries for wide range of applications.

## Warman AH

The Warman AH is the world's standard for the most difficult mill duties. The AH provides excellent wear life while maintaining efficiency during the wear cycle providing the best total operating cost. From cyclone feed to regrind, flotation and tailings, the Warman AH is the best choice.



- Size range (discharge) 1" to 18" (25mm to 450 mm)
- Capacities to 22,000 (5,000 m<sup>3</sup>/hr)
- Heads to 240 ft (73 m)
- Pressures to 300 psi (2020 kPa)

- Heavy duty construction
- Ductile iron fully lined casing
- Large diameter, slow turning high efficiency impeller
- Large, open internal passage
- Thick elastomer and metal liners
- Interchangeable elastomer and metal bolt-in liner
- Full flush gland, low flow, dry running centrifugal seals

## Warman AHP/AHPP

### Fully lined high pressure pump for multi-stage applications

Built upon the popular **Warman** AH series pump, the **Warman** AHP/AHPP series high pressure pump offers the same features and benefits as the AH, including identical hydraulics at up to 1000 psi. The higher pressure capability allows the user to operate several pumps in series all consolidated into one pump house saving the expense of supporting systems like gland water supply systems in the alternative design of several pump houses along the transport line.



- Size range (discharge) 4" to 18" (100 mm to 450 mm)
- Capacities to 20,000 gpm (4550 m<sup>3</sup>/hr)
- Heads to 240 ft (73 m)
- Pressures to 1,000 psi (6900kPa)

- Heavy duty construction
- Ductile iron fully lined casing
- Large diameter, slow turning high efficiency impeller
- Large, open internal passage
- Thick elastomer and metal liners
- Interchangeable elastomer and metal bolt-in liner
- Full flush gland, low flow, dry running centrifugal seals

## Warman XU

### Unlined horizontal slurry pump - sand & gravel, general slurries

The Warman XU is Weir Minerals' most recently released all metal unlined pump range that integrates newly designed wet end wear components with the long proven Warman mechanical end. Casing, impeller and liner have been optimized to provide the lowest possible wear while delivering outstanding efficiency over a wide range of medium to heavy slurry applications such as coal and sand and gravel.



- Configured volute
- Low V cutwater
- Impeller wear ring
- Extended shroud impeller
- Profiled impeller tip
- "Tear drop" frame liner
- Centrifugal seal performance
- Full flush gland, low flow, dry running centrifugal seals

- Size range (discharge) 3" to 12" (75 mm to 300 mm)
- Capacities to 10,000 gpm (2275 m<sup>3</sup>/hr)
- Heads to 240 ft (73 m)
- Pressures to 1000 psi (6900 kPa)

## Warman L

### Lined horizontal slurry pump - FGD & general medium to heavy duty slurry applications

Warman L series incorporates the same design points of the Warman AH plus higher efficiency impellers at an attractive initial cost. Designed for rugged duties while offering higher efficiencies, the Warman L series is a combination of the proven Warman AH unique features.



- Heavy-duty construction with through-bolt casing design
- Ductile iron fully lined casing
- Large diameter, slow turning high efficiency impeller
- Large open internal passages
- Cartridge-style bearing assembly
- Full flush gland, low flow, dry running centrifugal seals

- Size range (discharge) .75" to 26" (20 mm to 650 mm)
- Capacities 45,000 gpm (10,225 m<sup>3</sup>/hr)
- Heads to 180 ft (55 m)
- Pressures to 250 psi (1725 kPa)

## Warman GSL

### Horizontal slurry pump - flue gas desulfurization recycle service

Since the introduction of the first Flue Gas Desulfurization (FGD) systems in the 1970s, Weir Minerals has led the world in the supply of more than 4,000 specially designed FGD pumps. Realizing that modern absorber technology would require new and innovative pump designs, Weir Minerals developed the new high performance Warman GSL pump.



- Heavy-duty construction with through-bolt casing design
- Ductile iron fully lined casing
- High efficiency slow turning impellers
- Large open internal passages
- Cartridge-style bearing assembly

- Size range (discharge) 24" to 40" (600 mm to 1000 mm)
- Capacities to 80,000 gpm (18,180 m<sup>3</sup>/hr)
- Heads to 105 ft (32 m)
- Pressures to 125 psi (860 kPa)

## Warman HH/HRM

### Heavy duty high head lined slurry pump - high pressure transport lines

Warman HH/H/HRM pump lines were designed to produce high heads per stage at high pressures. Commonly used for long distance transport lines, the HH/H/HRM lines can often satisfy application duties with a single pump where others require multiple pumps in series.



- Size range (discharge) 1.5" to 6" (25 mm to 150 mm)
- Capacities to 4500 gpm (1025 m<sup>3</sup>/hr)
- Heads to 325 ft (100 m)
- Pressures to 750 psi (5170 kPa)

- Heavy duty construction
- Ductile iron fully lined casing
- Large diameter, slow turning high efficiency impeller
- Large, open internal passage
- Thick elastomer and metal liners
- Interchangeable metal bolt-in liner
- Full flush gland, low flow, dry running centrifugal seals

## Warman MD

### Horizontal dredge & gravel pump - dredging and pit services

The Warman MD is a new product offering, designed specifically to meet the demands/rigors of contractor and aggregate dredging. Employing the latest design techniques these pumps will provide superior resistance to wear, increased efficiencies, increased ease of maintenance and enhance the overall production of your operation.



- Range 100 mm (6/4") to 900 mm (36" x 36")
- Flow to 13,635 m<sup>3</sup>/hr (60,000 gpm)
- Heads to 84 m (275 feet)
- Pressures to 1600 kPa (232 psi)

- Large, open internal passages
- Minimal shaft/impeller overhang
- Full flush gland, low flow or dry running centrifugal seals
- Cartridge-style bearing assembly
- Solid chrome iron or alternative abrasion resistant casing
- Clamp ring design
- Full flush gland, low flow, dry running centrifugal seals

## Warman Froth (AHF/LF/MF)

### Froth pump - froth or paste slurries

Designed to handle heavy froth, the Warman Horizontal Froth pump has a unique inlet and impeller design that is very successful where others fail. A large oversized inlet with a unique impeller inducer blade handles heavy froth and higher viscosity dense slurries with ease. The Warman AHF/LF/MF line of horizontal froth pumps has proven valuable for very dense slurries where viscosity starts to become a pumping issue for the standard slurry pump.



- Size range (discharge) 2" to 16" (50 mm to 400 mm)
- Capacities to 14,000 gpm (3150 m<sup>3</sup>/hr)
- Heads to 120 feet (37 m)
- Pressures to 250 psi (1725 kPa)

- Unique impeller design for most difficult froth applications
- Heavy-duty construction with through-bolt casing design
- Ductile iron fully lined casing
- Large, open internal passages
- Thick elastomer and metal liners
- Handles viscous slurries
- Full flush gland, low flow, dry running centrifugal seals

## Warman MCR

### Horizontal slurry pump - SAG, ball, rod mill discharge service

The Warman MC is for the most aggressive wear applications. The MC pump easily manages large size particles in dense abrasive slurries and offers the right combination of ruggedness, durability, hydraulics and materials. From the most difficult mill discharge to water flushed crusher, the Warman MC is the best choice. When paired with the Warman AH, all the duties in your mill can be satisfied.



- Size range (discharge) 5" to 30" (125 mm to 750 mm)
- Capacities to 45,000 gpm (10,225 m<sup>3</sup>/hr)
- Heads to 180 ft (55 m)
- Pressures to 130 psi (900 kPa)

- Heavy-duty construction with through-bolt design
- Ductile iron fully lined casing
- Large diameter, slow turning, high efficiency impellers
- Large, open internal passages
- Thick elastomer and metal liners
- Full flush gland, low flow, dry running centrifugal seals

## Warman SLR

### Lined slurry pump - medium duty in-plant transfer pump for abrasive/corrosive service

Designed for medium duty slurry handling duties where slurry conditions are less arduous and use of a heavy duty slurry pump cannot be justified.



- Size range (discharge) 1.5" to 28" (40 mm to 700 mm)
- Capacities to 45,000 gpm (10,225 m<sup>3</sup>/hr)
- Heads to 140 ft (43m)
- Pressures to 600 psi (4135 kPa)

- Heavy-duty construction with through-bolt design
- Ductile iron fully lined casing
- Large diameter, slow turning, high efficiency impellers
- Large, open internal passages
- Thick elastomer and metal liners
- Full flush gland, low flow, dry running centrifugal seals

## Warman SP/SPR

### Lined vertical slurry pump - mill clean up and dewatering services

Fully elastomer lined or hard metal fitted. No submerged bearings or packing. High capacity double suction design. Optional recessed impeller and suction agitator available.



- Range 40 mm (1.5") to 250 mm (10") discharge
- Flow to 900 m<sup>3</sup>/hr (4000 gpm)
- Heads to 30 m (100 feet)

- Cantilevered shaft design
- Double-suction, semi-open impeller
- Elastomer or abrasion-resistant metal construction
- Agitator option keeps solids in suspension
- Optional suction extensions
- Universal motor bracket accommodates several motor sizes
- Recessed impeller option passes oversize material

## Warman GPS

50 Years of Warman pump excellence is embodied in our range of vertical Sump Pumps. This robust and functional design has been value engineered to include traditional Warman pump quality at the lowest possible ownership cost.



- Rigid motor mountings with positive and direct adjustment for vee belt drives
- Heavy duty bearing assembly. Provides long bearing life in arduous conditions.
- Rigid, single piece, center column support.

### Features and options to suit almost every application:

- Double impeller entry. Prevents air locking of impeller.
- Cantilevered shaft design
- A selection of practical shaft lengths to suit most applications.
- No submerged bearings

## Warman SHW/SJ

### Submersible pump - mill scale, ash handling, sump clean up

A heavy duty all chrome wet end coupled with a motor designed and built by Weir Minerals for the most demanding applications.



- Temperature sensor
- Moisture detector
- Mechanical seals
- Heavy-duty water end
- Easy maintenance access
- Optional Agitator

- Range 50 mm (2") to 300 mm (12") discharge
- Flow to 1600 m<sup>3</sup>/hr (7000 gpm)
- Heads to 54 m (175 feet)

The **Warman SJ** submersible dewatering pumps represent an optimal combination of ruggedness, durability, hydraulics and materials technology. These pumps are designed to perform in the most arduous submersible mine and quarry dewatering applications. They are equipped for immediate use the low weight design encapsulated motor and no moving parts makes installation and operation easy and safe. These pumps are submersible up to 20 m depth and as the pump is installed submerged in the pit they have no suction lift limitations and hence this are superior to any self priming system.



- Heavy duty construction with lightweight portability
- Optimum mix of wear resistant materials.
- Good value modular design
- Temperature sensor fitted with motor windings
- Silicon carbide faces on primary seal
- High specification mining cable
- Good value modular design

## GEHO Pump TZPM, TXP, ZPM, ZPR, DHT, DHG

GEHO® pumps are world market and technological leaders in the design and manufacture of piston, piston diaphragm and hose diaphragm pumps for slurry, sludge and paste applications. The pumps handle a wide range of applications such as long-distance slurry pipeline transport, mine dewatering and backfill, autoclave, reactor and digester feed, gasifier feed and high density tailings disposal.



- Flow to 700 m<sup>3</sup>/hr (3000 gpm)
- Pressures to 340 bar kPa (5000 psi)
- Slurries up to 75% CW (90% CW DHT)
- Temperatures to 200°C (392°F)
- Viscosity to 8000 cps (100,000 cps DHT)

- Easily maintained
- Low operational cost
- Low spare usage
- Very efficient (up to 96%)
- Very reliable
- Fully automatic operation
- Automatic protection from system failure

## CAVEX Hydro Cyclones

CAVEX® hydro cyclones feature unique laminar spiral inlet geometry. CAVEX hydro cyclones are designed to deliver maximum efficiency, maximum capacity and longer wear life than conventional involute or tangential feed cyclone designs. For grinding circuit applications, Cavex cyclones increase circuit capacity by minimizing the quantity of fines bypassing to the underflow stream. Cavex hydro cyclones achieve these results by maximizing the air core diameter created within the rotating mass of fluid in the cyclone.



**100 CVX  
150 CVX  
250 CVX  
400 CVX**

- Laminar spiral inlet geometry
- Reinforced polyester resin casing
- Snap fit, replaceable, elastomer liners
- 316L ss quick release clamp fasteners
- Poly or Hyper chrome vortex finders
- Rubber, urethane, or ceramic spigots
- Moulded HDPE or elastomer lined steel overflow pipes



**500 CVX  
650 CVX  
800 CVX**

- Laminar spiral inlet geometry
- Fabricated steel or cast ductile iron casings\*
- Replaceable, elastomer liners, up to 1.5" thick. Ceramic lower cone available
- Rubber vortex finders
- Rubber, or ceramic spigots
- Rubber lined steel overflow pipe or
- "Air Core Booster" cap available

## Multiflo® Mine Dewatering Solutions

Weir Minerals MULTIFLO® has been designing and manufacturing mine dewatering pumps since 1976. We develop dewatering solutions for open pit and underground mines that are reliable and well supported, no matter where the mine is located.



MULTIFLO ME

### Multiflo® ME Electric pontoon pump units

Multiflo® ME range is highest quality, custom engineered heavy duty pumps for mine pit dewatering and process plant water feed applications. Pontoon designed to suit specific site requirements.

- Range of corrosion and wear resistant materials
- Range of self priming arrangements
- Safe stable design
- Compliant with mine specifications
- Single or multiple pump sets
- Direct or belt drive
- Inclined or vertical pump set mounting

### Multiflo® MF Electric pontoon pump units

Multiflo® MF pump units are custom built to ensure the very best performance for your operations and survival under toughest Operating conditions.

- Engineered Pump Solution.
- Vactronic prime system.
- Heavy duty steel fabricated pump based and canopy.
- Continuous welding.
- Chrome Iron pump ends
- 24 hours fuel tank.



MULTIFLO MF

## Multiflo® CF diesel pump units

The Multiflo CF range is the cost effective pumping solution. The CF range of auto vacuum primed, diesel driven pump units have been designed and built to simplify both the operation and maintenance of the unit. The range of CF pump units are built for general purpose pumping application. The CF has been designed and built to reduce costs and manufacturing lead times while maintaining a high quality standard.



- Compact Design
- Mechanical auto priming system
- Caterpillar diesel engine
- Centre lift point
- Easy operation and maintenance
- Cost Effective

## Valves

The ISO GATE is designed for those applications where high abrasion resistance is needed. Its robust design and rugged heavy duty construction provides greater reliability and longer life in heavy duty, highly abrasive, corrosive and coarse slurries. Using materials proven by Weir Minerals' experience in abrasion and corrosion resistance, the ISO GATE heavy duty slurry knife gate valve combines a low maintenance design with a wide range of available materials making the valve suitable for a variety of applications.

WS VALVES	WH VALVES	WB VALVES
Range : 2" to 16"	Range : 3" to 12"	Range : 18" to 24"
Working Pressure : 10 bar	Working Pressure : 20 bar	Working Pressure : 2 bar
Gate : 316 SS	Gate : 316 SS	Gate : 316SS
Sleeve : Natural Rubber/EPDM	Sleeve : Natural Rubber/EPDM	Sleeve : Natural Rubber/EPDM



### Mode of Operation

- Hand wheel
- Hydraulic
- Pneumatic
- Electric
- Gear operated

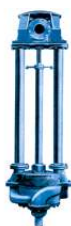


## Hazleton Specialty Pumps

HAZLETON® slurry pumps are the world's most comprehensive range of Engineered-to-Order centrifugal slurry pumps for use in chemical, refinery, and general industrial applications. When the petroleum industry expose their pumping systems to erosive materials, such as coke, catalyst, sand, ash, coal or shale the pumps selected need to be durable, reliable, and of the highest quality. Since 1916, Weir Minerals has supplied long term slurry pumping solutions focused on longevity and reliability to meet the demands of challenging applications for the petroleum industry. Hazleton slurry pumps incorporate design features and standards that ensure durability and reliability and also differentiate it from the competition. Some of design features include:



**Horizontal Hazleton CTC**



**Vertical Hazleton VMS**



**Submersible Hazleton STC**

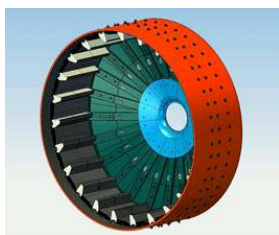


**Nuclear Hazleton CANYON**

- Hydraulic design which incorporate the unique Hazleton® "Controlled Diffusion" process, to minimize erosive vortices' and reduce slurry velocities in volutes, for longer wear life.
- Improved efficiencies versus our competitors - typically 3-5% higher.
- Utilization of materials and specialty coatings to achieve maximum wear life.
- Wear life requirements which can be designed into the pump at the beginning of the design process.
- Back Pullout & Front Pullout design which allows in-place inspection & maintenance.
- Conformance to API 610 10th Edition.
- Design to customer specifications
- Quick design / delivery
- Lowest vibration during operation.

## Vulco Mill Liners

Weir Minerals and Vulco wear resistant linings have been in the forefront of innovative design and the development of low cost, long wearing rubber mill lining systems. These rubber products have continued to replace steel as the material of choice by providing superior performance benefits including:



- Lower total mill lining costs
- Quicker initial and re-supply times
- Standardized product sizes
- Lower component weight
- Safer, easier and faster removal and installation of rubber mill lining systems
- Cheaper delivery costs
- Lower mill weight.
- Reduced power draw on start up and during operation due to lower total mill weight.
- Lower value of inventory stock holdings.
- Quieter and more environmentally friendly working environments.
- Much quicker inspection times.
- Greater mill availability through less down time for mill liner replacement.

## Dense Media Cyclone

Dense Medium Cyclone was first developed by Dutch State Mines in Netherlands in 1940s and these cyclones are well accepted globally for applications such as coal washing, recovery of diamonds, iron ore concentration, chromit ore concentration and plastics separations.



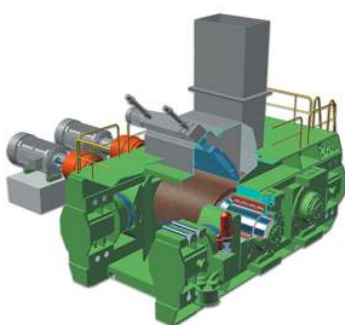
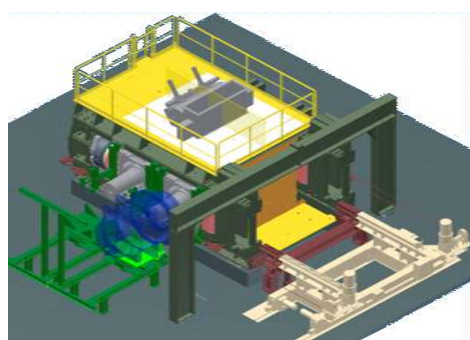
### Features

- Reduced turbulence at the inlet due to laminar spiral inlet geometry.
- Sharper separation.
- Higher throughput capacity than any other cyclone of the same size.
- Engineered ceramic tiles for longer life.

## KHD - High Pressure Grinding Roll

High pressure grinding is achieved by an advanced type of grinding roll. Contrary to conventional crushing rolls, the particles are broken by compression in a packed particle bed, and not by direct nipping of the particles between the two rolls. HPGR grinding significantly enhances overall throughput. This results in the creation of a large proportion of finished product and the reduced Bond Work Index of the pressed material. This generally allows for a reduction in the projected number of equipment units in tertiary crushing, quaternary crushing and grinding.

High Pressure Grinding Rolls (HPGR) offer several benefits to the minerals industry, such as



- **Low energy** consumption, 0.8-3.0 kWh/t
- Ability to **process moist ores**, up to 10%
- **Enhanced downstream recovery** and grind ability
- **Improved grade** of downstream products
- **Low maintenance** requirements
- **Low space** requirements
- **Low vibration** and noise
- **High availability** >95%
- **High wear surface life** 6,000 - 36,000 hours

## Linatex Products

Linatex rubber products are extremely strong, tough and resilient. When this is combined with the excellent tear, cut and abrasion resistance, Linatex rubber is irreplaceable in abrasion trouble spots. The sustained performance advantage in the rubber industry lies in well-proven, patented manufacturing process. The unique process creates a product that provides superior abrasion resistant performance when compared to other wear materials including other natural and synthetic rubbers, polyurethane and steel.

The product offering of Linatex Rubber Products which serves the wide range of applications in various industries includes:

### Screens

- The Linatex range of linear motion vibrating screens is robust in design and construction. With the benefits of high efficiency, high capacity, low headroom and reduced operating and maintenance cost, these screens are ideally suited for heavy duty application in the sand processing and minerals processing industries. Weir Minerals manufactures three types of Linear Motion screens:
  - *Banana*
  - *Horizontal*
  - *Dewatering*

## Weir Minerals Screen Range



- Banana Screens
  - Sizes range from 7' x 20' up to 12' x 32'
  - Single and double deck configurations
  - Excitation method: Geared Exciters – Linear motion
    - BHP – Escondida, Cerro Colorado, Ekati Diamonds



- Horizontal Screens
  - Sizes range from 4' x 12' up to 12' x 24'
  - Single and double deck configurations
  - Excitation Method: Geared Exciters & Vibrating motors – Linear motion
    - Intrepid Potash, Thompson Creek



- Dewatering Screens
  - Single deck configuration
  - Excitation method: Geared Exciters & Vibrating motors – Linear motion

## Specialty Hoses

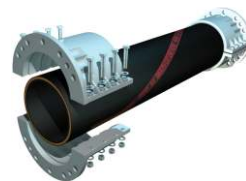
Linatex Specialty Rubber Hose is designed for maximum wear life to minimize down time. Specialty Hose range incorporates slurry and chemical mining hose, dredge hose and a wide variety of performed bends, reducers and T pieces all of which are available with versatile end of array types.

- Customized to meet customer needs
- High Quality Linatex wear resistant compounds used as internal wear liner
- 2" to +36" ID.
- Pressures to 2000 PSI, 3 x Safety factor
- Flexible, Straight and Preformed bends
- Electronic Wear Indicator system available (pending FFC approval)
- Lowest Operational Cost performance

Linatex Preformed Hose Bends



Linatex Cut End Hose 801



Linatex Soft Wall Mining Hose 806

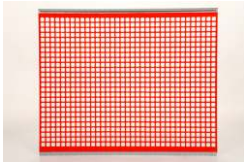


Linatex Dredge Hose 1000



## Linatex Rubber Products : Screen Media

### Armor Polyurethane Wire Screen Media



**LINACLAD Screen Media**



**VULCAN Rubber Screen**

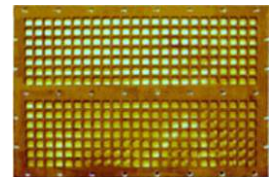
#### Features :

- High Quality Linatex wear resistant rubber and polyurethane & OT wires
- Systems for all types of screens:
  - Primary, Secondary, Tertiary, SAG and Ball Discharge, Trommels, Dewatering and Trash Screens
- Specialized fixing systems to improve change out times
- Maximized open area balanced with associated wear rates and impact needs
- Screen selection and separation modeling available
- Openings down to 0.25mm (less 1/64")
- Lowest Operational Cost performance
- Customized to meet customer needs

**Light Duty Screen**



**Punched and Plasma Cut Screen**

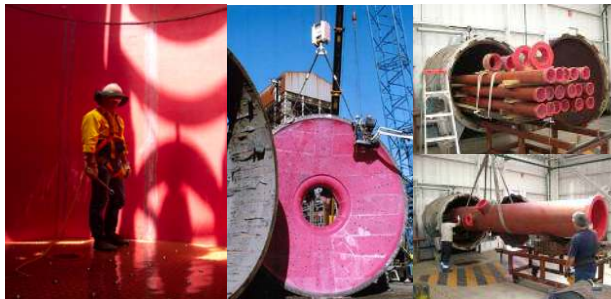


## Linatex Rubber Products : Rubber Lining & Spools



#### Rubber Sheet

- Linatex 40 duro compound – the red rubber
- Full range of natural and synthetic rubbers
- Cured rubber and uncured materials available



#### Rubber lining and Piping Systems

- Full pipe system design capabilities
- 2" to 48" diameters, lengths to 40ft
- Cold bonded and Vulcanized systems



#### On site Rubber Lining Services

- Fully trained site rubber service team
- Full tank lining capabilities
- Small reline and large project needs
- Qualified for all associated H&SE requirements

## Weir Minerals Services

### Weir Minerals Service offerings include :

- Cooperative Cost Focus Groups
- Pump Audits
- Pump Maintenance Monitoring
- Wear Life Monitoring
- Performance Based Agreements
- Spare Parts Supply Agreement
- Customized Training Programs
- Rebuild Service
- Pump Exchange Services
- Tailored Maintenance Packages



**WARMAN®**

Centrifugal Slurry Pumps

**GEHO®**

PD Slurry Pumps

**LINATEX®**

Rubber Products

**VULCO®**

Wear Resistant Linings

**CAVEX®**

Hydrocyclones

**FLOWAY®  
PUMPS**

Vertical Turbine Pumps

**ISOGATE®**

Slurry Valves

**MULTIFLO®**

Mine Dewatering Solutions

**HAZLETON®**

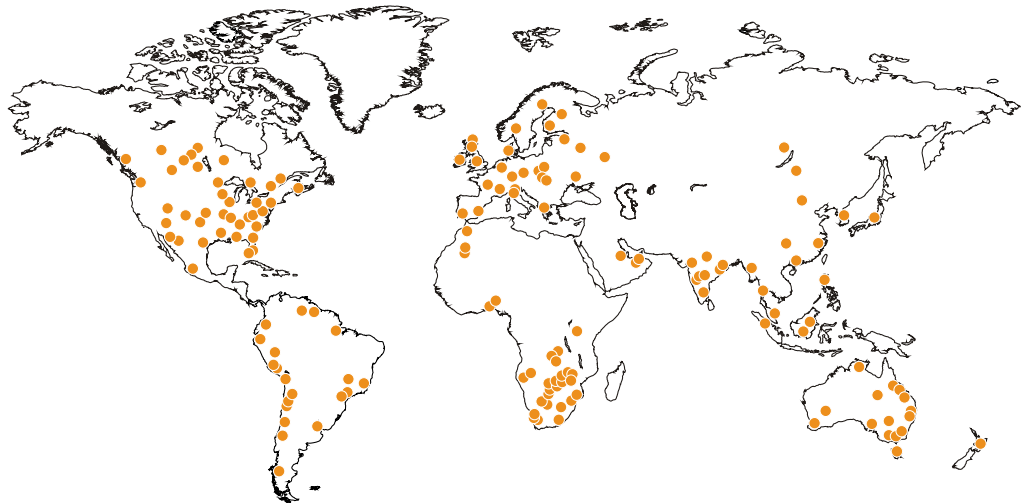
Specialty Slurry Pumps

**LEWIS PUMPS™**

Vertical Chemical Pumps

**BEGEMANN  
PUMPS™**

Centrifugal Process Pumps

**WEIR****MINERALS  
SERVICES™****Factory & Corporate Office:**

Weir Minerals India Pvt. Ltd.

# 471/D-1, 3rd Main, 4th Phase, Peenya Industrial Area, Bangalore-560058

Ph - +91 (0) 80 41372777, Fax - +91 (0) 80 41179230

**Sales & Marketing Office:**

Weir Minerals India Pvt. Ltd.

# 2, Block A, Platinum City, HMT Watch Factory Road, Off Yeshwanthpur - Peenya Road, Bangalore-560022.

Ph - +91 (0) 80 40449000, Fax - +91 (0) 80 40449090

**Branch Offices:**

- Hig - 6/2, Housing Board Colony, Chandrashekharpur, Bhubaneswar - 751 016. Orissa. Ph - 0674-2742024
- 'Mangalam', Block A, Room No. 303, 3rd Floor, #24/26, Hemanta Basu Sarani, Kolkata - 700 001. Ph - +91 (0) 33 3028 4891  
Fax- +91 (0) 33 302804895, Mob: +91 (0) 98300 17737
- 219, Ansal Chambers II, 6, Bhikaji Cama Place, New Delhi - 110 066. Ph - +91 (0) 11 4602 6776, Fax- +91 (0) 11460 32296,  
Mob: +91 (0) 98739 91107
- 910, Siddharth Complex, Nr. Express Hotel, R. C. Dutt Road, Alkapuri, Vadodara - 390 007. Ph - +91 26523 55026,  
Mobile : +91 (0) 97277 15340 / 97277 15160
- TC 65/2127(3), Athira, CDIT Road, Studio Jn, Thiruvallam - 695 027. Thiruvananthapuram, Kerala. Ph - 0471 2382342,  
Fax: +91 (0) 471 2382342, Mobile: +91 (0) 9745500391
- D-42, Dream Emerald, Behind: Rosery College, Navelim - 403 707. Goa. Mob: +91 (0) 93706 36535
- Door No. 39-10-40/3/1, Plot No. 107, Ground Floor, Tenneti Nagar, Madhava Nagar, Vishakapatnam - 530 007.  
Ph - +91 (0) 891 2719660 / 9661, Fax- 08912719661, Mob: +91 (0) 97010 01146 / 97034 44146

**Total Care Centre:**

- Special Plot No: 30, Industrial Estate, TB Dam Road, Dist : Bellary, Hospet - 583 203. Karnataka, Ph - +91 (0) 96208 00021
- Door No. 39-10-40/3/1, Plot No. 107, Ground Floor, Tenneti Nagar, Madhava Nagar, Vishakapatnam - 530 007.  
Ph - +91 (0) 891 2719660/9661, Fax- 08912719661, Mob: +91 (0) 97010 01146 / 97034 44146

For information on Weir Minerals products or services,  
contact the nearest sales office or visit

**[www.weirminerals.com](http://www.weirminerals.com)**

Excellent  
Minerals  
Solutions

